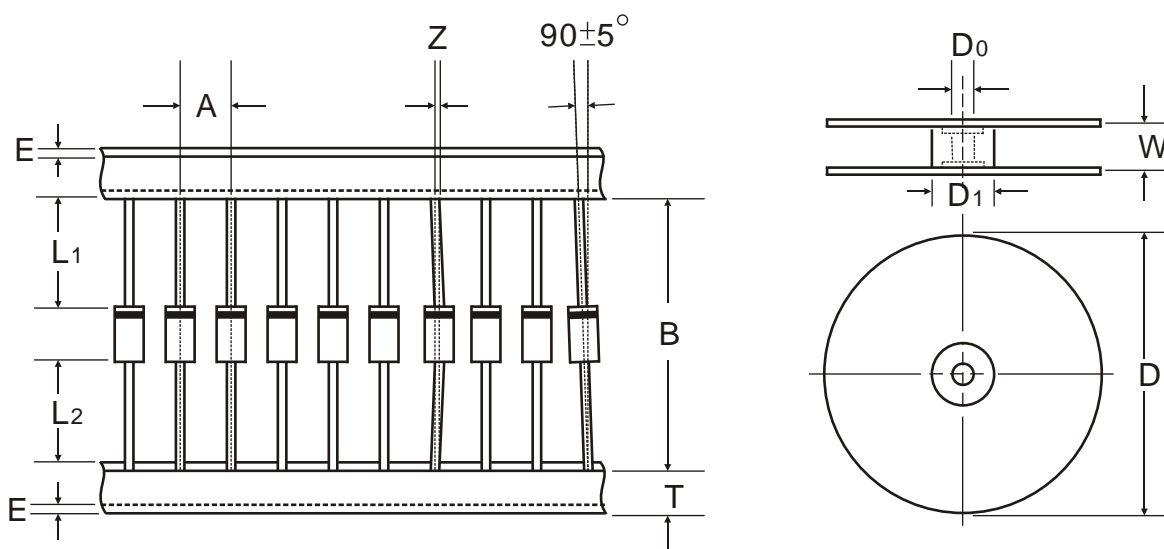


## REEL TAPING FOR AXIAL LEAD DEVICES

Axial lead devices are packed in accordance with EIA standard RS-296-D and specifications shown below:

COMPONENT OUT LINE	COMPONENT PITCH A	INNER TAPE PITCH B		CUMULATIVE PITCH TOLERANCE
	$\pm 0.5\text{mm}(.020")$	$\pm 1.5\text{mm}(.059")$	$\pm 0.5\text{mm}(.020")$	
DO-35	5.0mm	26.0mm		2mm/20pitch
DO-35	5.0mm		52.4mm	2mm/10pitch
DO-41	5.0mm	26.0mm		2mm/20pitch
DO-41	5.0mm		52.4mm	2mm/10pitch
DO-15	5.0mm		52.4mm	2mm/10pitch
DO-27/DO-201AD	10.0mm		52.4mm	2mm/10pitch
R-6	10.0mm		52.4mm	2mm/10pitch



ITEM	SYMBOL	SPECIFICATION (mm)	SPECIFICATION (inch)
Component alignment	Z	1.2max.	0.048max.
Tape width	T	$6.0\pm 0.4$	$0.236\pm 0.016$
Exposed adhesive	E	0.8max.	0.032max.
Body eccentricity	$ L1 - L2 $	1.0max.	0.040max.
Reel outside diameter	D	330.0	13.0
Reel inside diameter	D1	$85.7\pm 0.3$	$3.375\pm 0.012$
Feed hole diameter	D0	$30.0\pm 0.4$	$0.655\pm 0.016$
Reel width	W	$79.0\pm 1.0$	$3.110\pm 0.040$

**Notes:**

1. Each component lead shall be sandwiched between tapes for a minimum of 3.2mm (0.126")
2. the reel width "W" for 28mm taping is  $50.0\pm 1.0\text{mm} (1.97\pm 0.040")$